

# Activity Sheet 1 for “Anita the Artist”, Webb’s Wondrous Tales Book 1

PILINUT PRESS, INC.

Name: \_\_\_\_\_

1. Definition match. Draw a line between the word and its definition.

curse	story
dart	painting of a person
figure	a loose cover over the head
hood	great anger
lament	small body of water
pond	sadness; misery
portrait	mourn; weep
tale	swear; to wish injury or harm on; jinx
wizard	dash; run
woe	magic man
wrath	form; body; outline

2. Write each word from the list in the first exercise.

---

---

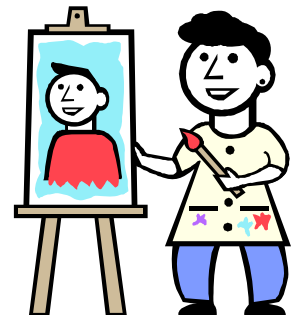
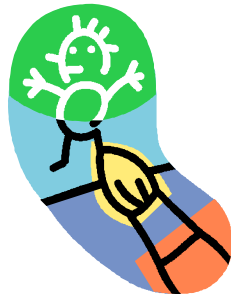
---

3. Complete the word in the sentence using a word from the list below. Each word is used only once.

curse dart figure hood lament pond portraits tale wizard woe wrath

- A. I went fishing at the \_\_\_\_\_ .
- B. Anita put up her \_\_\_\_\_ so her ears would not get cold.
- C. Sam \_\_\_\_\_ed that he did not get an A on the test.
- D. The \_\_\_\_\_ hung in the dining room.
- E. "Mow the lawn or suffer your father's \_\_\_\_\_," said Mom.
- F. The witch uttered a \_\_\_\_\_ and the prince became a frog.
- G. A ghostly \_\_\_\_\_d \_\_\_\_\_ed through the trees.
- H. After hearing such a sad \_\_\_\_\_ of \_\_\_\_\_, I gave \$5.
- I. The \_\_\_\_\_ wore a velvet cloak and a tall, pointed hat.

4. Draw a line from the word to the drawing which shows the word's meaning. Each word matches at least one drawing. A word might match more than one drawing.



Portrait

Hood

Pond

Figure

Wizard

